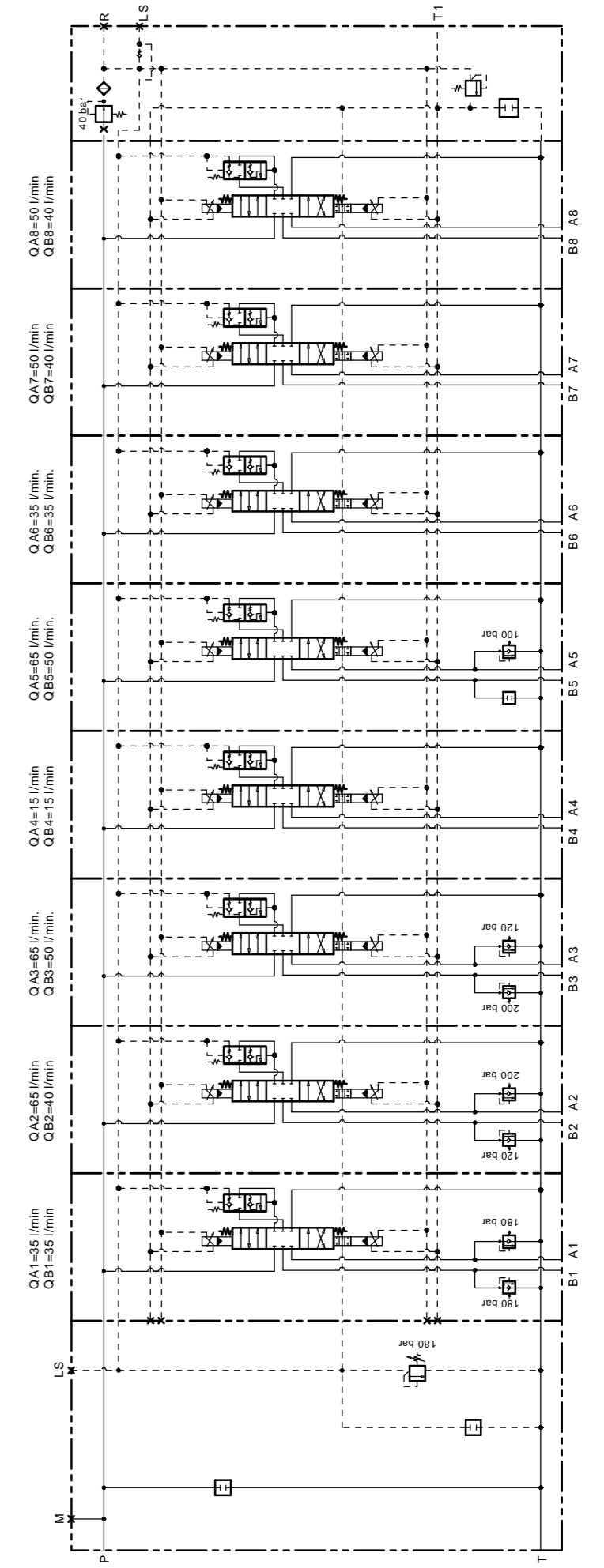


PAINTING COLOR: BLACK RAL9005

ELECTRO HYDRAULIC PROPORTIONAL 12V

Feeding reducing pressure (bar)	35 bar
Supply voltage (Vdc)	12Vdc
Coil resistance R20	4,7
ON-OFF control current (mA)	2500
Proportional control current (mA)	600 - 1300
PWM frequency suggested (Hz)	70-90 Hz
Connector	AMP Junior Power Timer

TECHNICAL SPECIFICATION	
Nominal Pump Flow	150 l/min
Maximum pressure inlet	350 bar
Nominal Flow Rate Port A/B	100 l/min
Stand By Pressure	14 bar
Operating Temperatures	-25/+80 °C
Port Thread Size P/T	3/4"G
Port Thread Size A/B	1/2"G
Port Thread Size T1, M & R	1/4"GAS



Description: HC-EX38/8 CA + VERN.



Group:	EX38	Scale:	
Designers:	HK	Date:	10/02/2016
Schema Code:	60150613CR	CODE:	I08176
Mod.:	0		