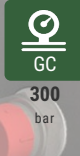
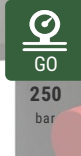
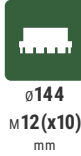




60
kN



-50
kN



30
kN

-25
kN

1850
nm

45
kg

25
l/min

Hydraulic rotator FHR 6FF2R is ideal for professional use in forestry, agriculture, road and building construction, recycling industry, general cargo and material handling.

Rotator's upper mount is applied in FLANGE form factor. Rotator commonly is used for rigid mounting on the crane tip or in assembly with tilt equipment. Rotator is equipped with locating pins for ease mounting. top.flange.diameter 144mm. top.flange.screw.count 10 12 screws.

Rotator lower mount is applied in FLANGE form factor to mount direct on grapple / tool surface by fixing with screws

