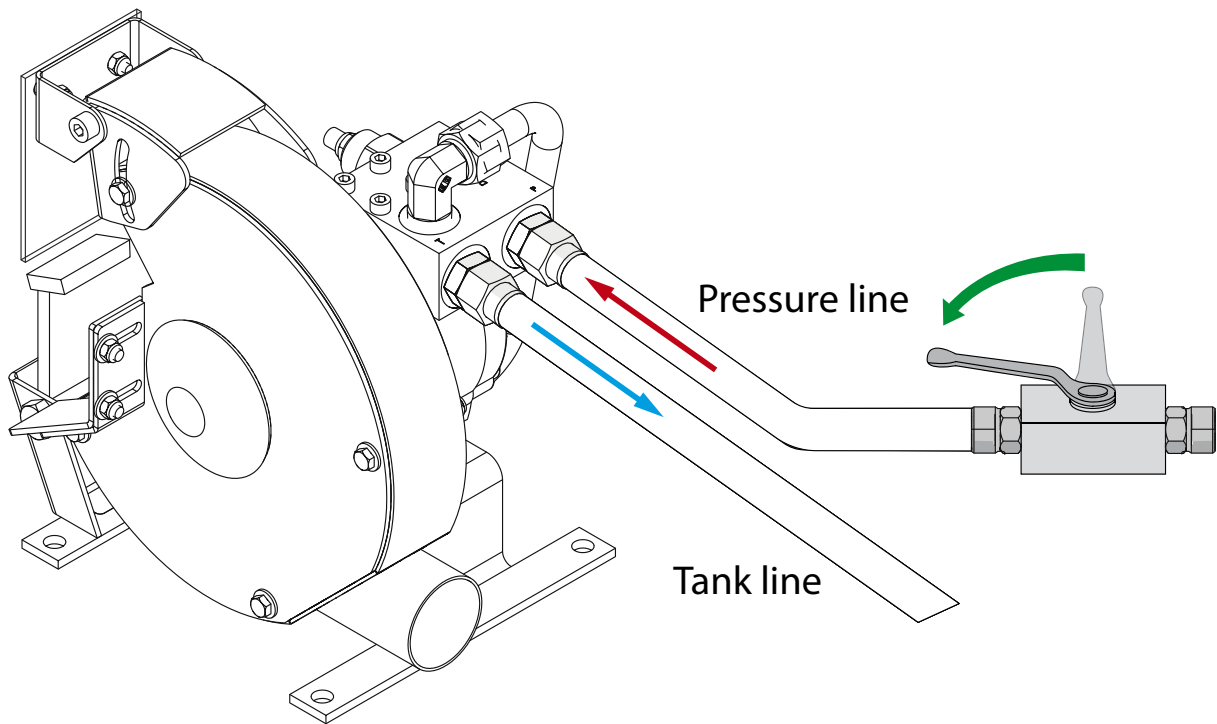


CONNECTION PORTS		HHK 200 - 12	HHK 200 - 17
Pressure Line	P	BSP 1/2"	BSP 1/2"
Tank Linet	T	BSP 1/2"	BSP 1/2"
GRINDSTONE CHARACTERISTICS			
Speed	rpm	3000	3000
Grindstone mm (in)	Ø	200 (7.9)	200 (7.9)
	Width	9 - 32 (2.37 - 1.26)	9 - 32 (2.37 - 1.26)
	Hole	13 - 32 (0.5 - 1.26)	13 - 32 (0.5 - 1.26)





The HHK unit is started by opening the hydraulic control valve.

		HHK 200 - 12	HHK 200 - 17
HYDRAULIC POWER REQUIREMENTS			
Flow min.	l/min (gpm)	12 (3.2)	17 (4.5)
Flow max.	l/min (gpm)	24 (6.4)	34 (9.0)
Pressure max.	bar (psi)	210 (3000)	
HYDRAULIC FLUID REQUIREMENTS			
Viscosity	cSt	10-200 / optimum 25-35	
Temperature *	° C (° F)	max. 70 (160)	
Filter ratio	µm	25 or better	

* Depending on hydraulic fluid. Read more on user manual chapter 6.2 "Hydraulic fluids".

READ THE DETAILED SAFETY, OPERATING AND INSTALLATION INSTRUCTIONS FROM THE USER MANUAL!

Download the full user manual