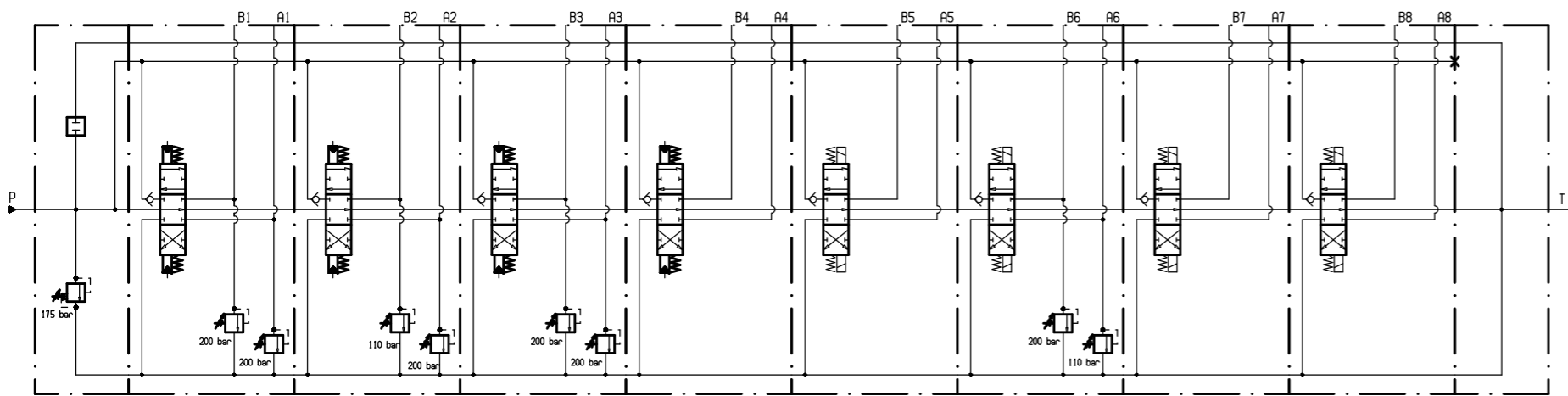


STANDARD WORKING CONDITION

Nominal Flow	80 l/min
Max. Input Pressure	350 bar
Max. back pr. on Tank line	20 bar
Operating temperature range	-20/+80°C
Kinematic Viscosity Range	10-300 cst
Max. Contamination level	9 (NAS 1638) - 20/18/15 (ISO 4406:1999)
Recommended Filtration level	b10 >75 (ISO 16889 : 2008)
PORT DIMENSIONS:	
Pilot Port	1/4" BSP
Tank Port T	3/4" BSP
Inlet Port P	1/2" BSP
Working Ports A & B	1/2" BSP

ELECTRIC PUSH-PUSH CONTROL-12V (D4)

Rated voltage	12 VDC
Rated current	3.75 A
Rated power	45 W
Permitted working voltage	+/-10% Nominal
Max ambient temperature	+40°C
Max.oil temperature	+80°C
Operation time	S1 (100%)
Protection degree	IP65
Insulation degree	H
Standard connector	DIN 43650
Spool stroke	2,8 + 2,8 mm



Description: DISTRIB. HC-D4/8



Group:	D4	Scale	1:2.5
Approv.:		Date	
Designer:	SD	Date	14/09/2016
		Schema Code	97723
		CODE	I08698
		Mod.	0