

## Instructions for connecting hoses and electrical coupling in BC60/6

Pressure from pump to port: Port P

Tank connection to port: Port T

### SECTION 1 SWING

Swing to the left: Port A1 Inductor a1 Connector L4

Swing to the right: Port B1 Inductor b1 Connector L3

### SECTION 2 ROTATOR

Rotator counterclockwise: Port A2 Inductor a2 Connector R3

Rotator clockwise: Port B2 Inductor b2 Connector R4

### SECTION 3 GRAPPLE

Grapple closed: Port A3 Inductor a3 Connector RC

Grapple opened: Port B3 Inductor b3 Connector RD

### SECTION 4 EXTENSION TUBE

Extension tube in: Port A4 Inductor a4 Connector LC

Extension tube out: Port B4 Inductor b4 Connector LD

### SECTION 5 MAIN BOOM

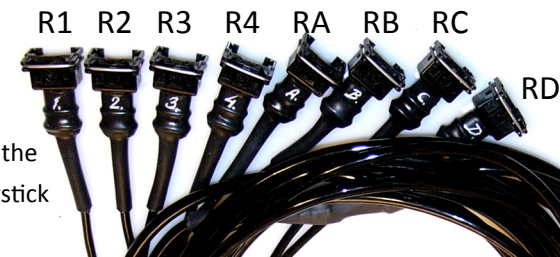
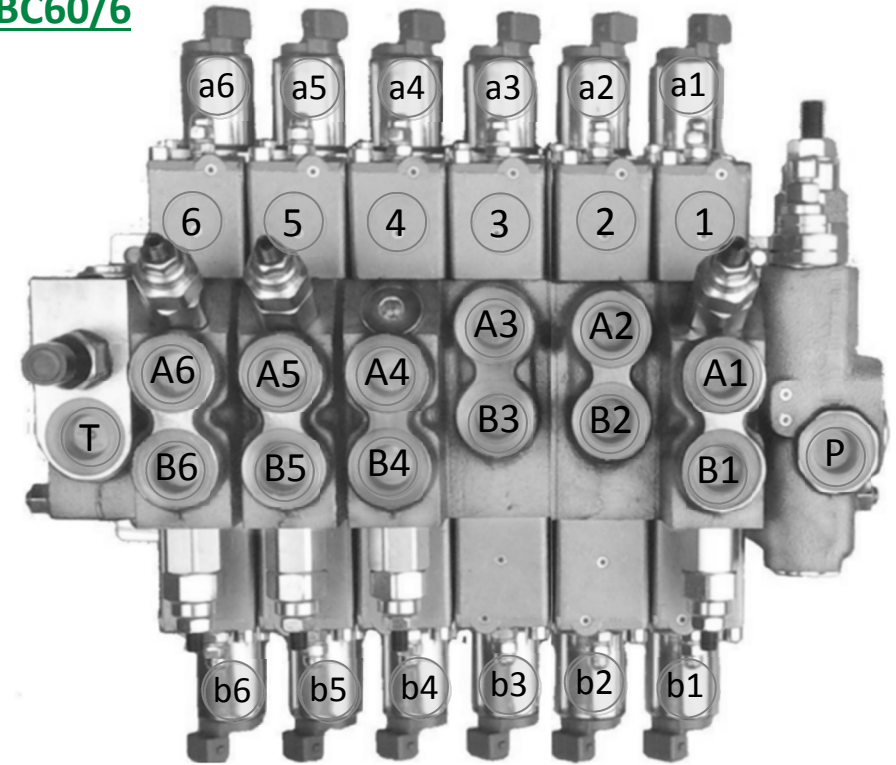
Main boom up: Port A5 Inductor a5 Connector R2

Main boom down: Port B5 Inductor b5 Connector R1

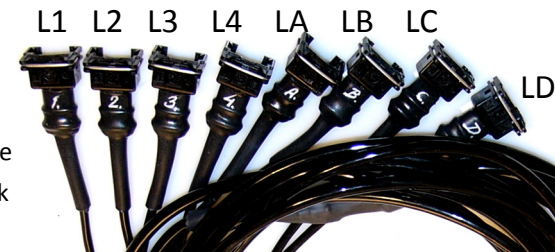
### SECTION 6 SECOND BOOM

Second boom up: Port A6 Inductor a6 Connector L2

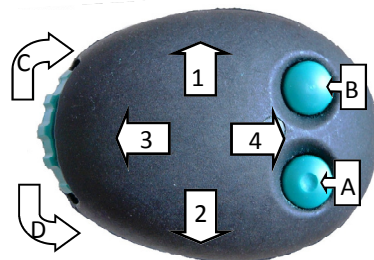
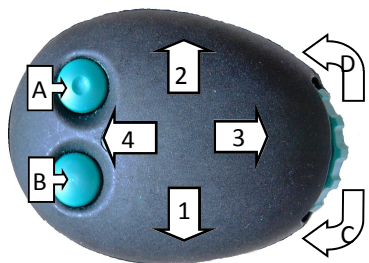
Second boom down: Port B6 Inductor b6 Connector L1



Cabel to the Right joystick



Cabel to the Left joystick



**REPARK**  
WWW.REPARK.LV

**ROTEC**  
engineering