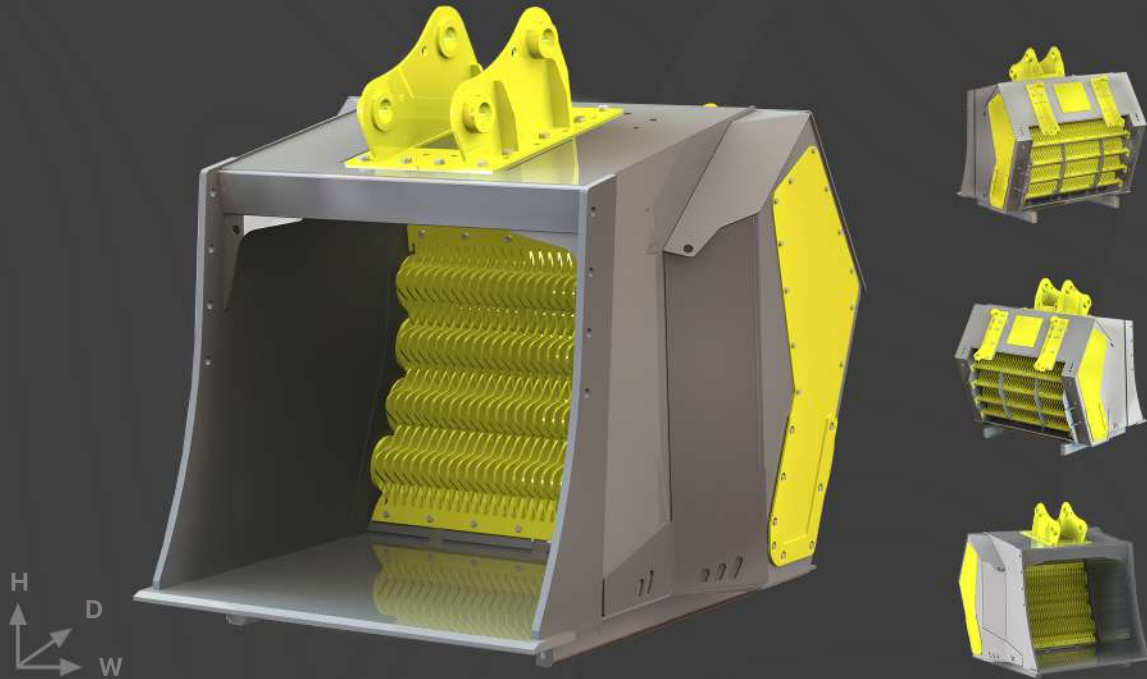


# VPH 4-1700 Screening Bucket

VPH 4-1700 is the big brother of the 3-1700 screening bucket model with four horizontal rotors for larger machine sizes. There are also several customized versions available for screening and crushing based on specific use cases.



## Specifications

### Base Machine

Excavator: 24,000 - 35,000 kg  
(53,000 - 77,000 lbs)

Wheel loader: 14,000 - 20,000 kg  
(31,000 - 44,000 lbs)

### Flow Rate

Oil Flow min – max: 200 - 360 l/min  
(53 - 95 gal/min)

### Pressure

Oil Pressure: 210/250 bar (3,000/3,600 psi)

### Volume

ISO/SAE: 2.7 - 3 m<sup>3</sup> (3.5 - 3.9 yd<sup>3</sup>)  
Screen area: 1.6 m<sup>2</sup> (17 ft<sup>2</sup>)

### Dimensions

Height: 1,700 mm (67.0 in)  
Width: 2,050 mm (80 7/10 in)  
Depth: 1,950 mm (76 4/5 in)

### Weight

Without accessories: 2,750 kg (6,060 lbs)

### Additional notes:

- Product Name: VP = Viper; H = Horizontal axles, V = Vertical axles; first number = number of axles, second number = axle length in mm.
- Base machine weight recommendations are suggestive. Check the suitable tipping load from the base machine user manual.
- Hydraulic flow values are indicative. Always verify the correct values for the application from the manufacturer.
- Product weight is based on a bucket without any additional equipment. Blade spacing and blade thickness may affect the weight.
- The oil pressure values are indicative. Always verify the correct values for the application from the manufacturer.
- Changes to document information without prior notice are reserved.