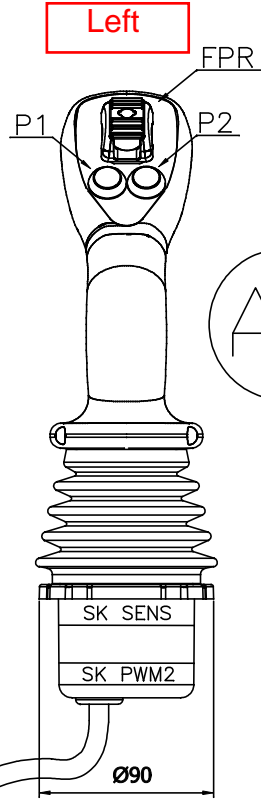
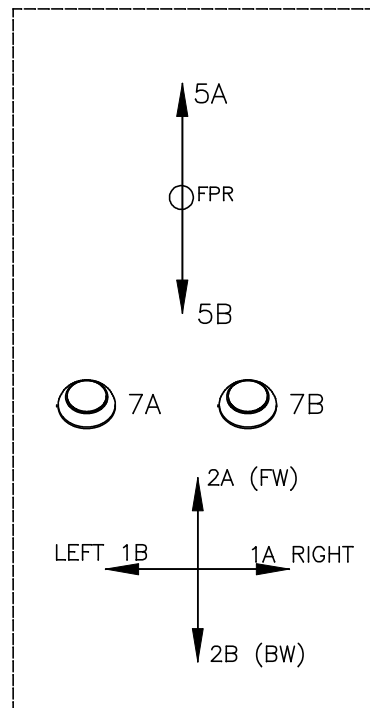
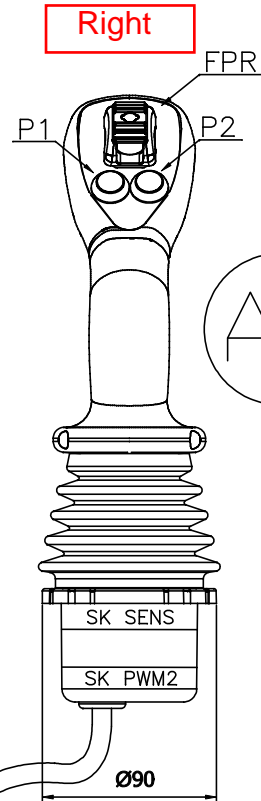


Jhm-L4D/PWM-MS/02P9-1FPR-1PWM/R00-DT

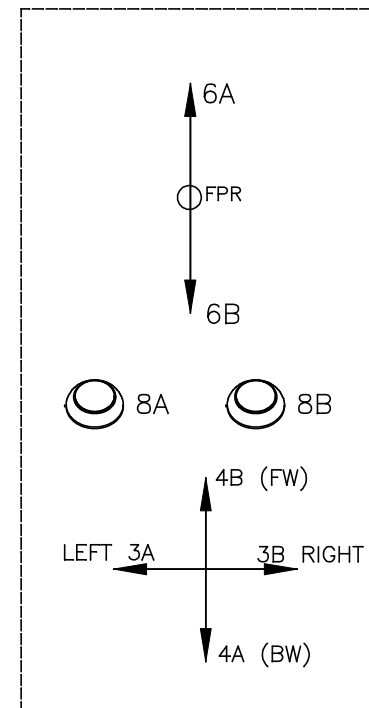
Jhm-L4D/PWM-MS/02P9-1FPR-1PWM/R00-DT



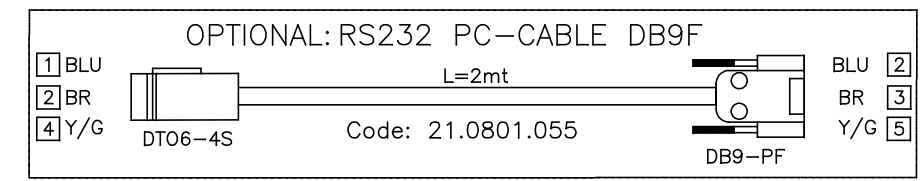
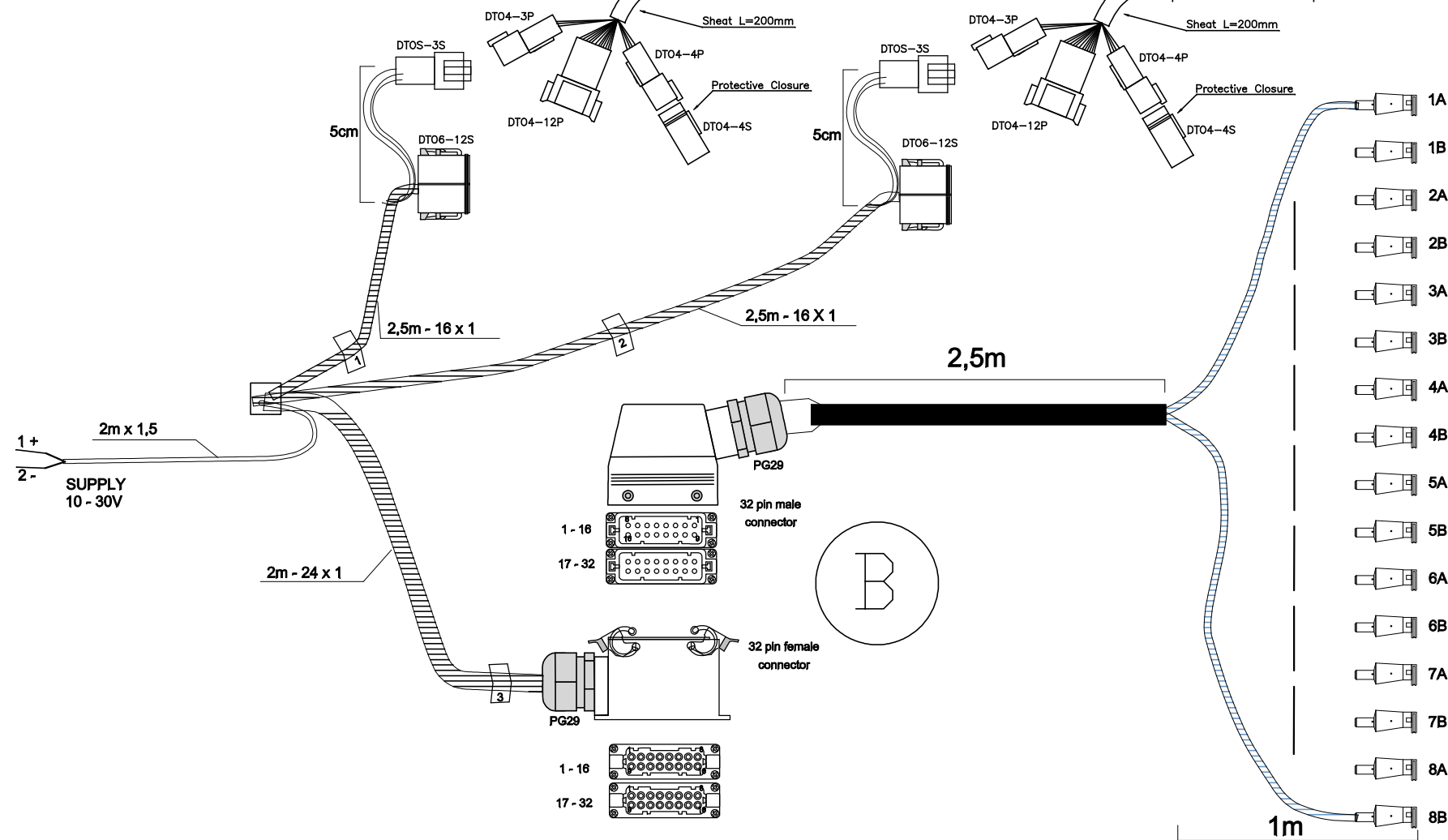
A1



A2



C



- 1A
- 1B
- 2A
- 2B
- 3A
- 3B
- 4A
- 4B
- 5A
- 5B
- 6A
- 6B
- 7A
- 7B
- 8A
- 8B

AMP Junior timer connectors
2ways female contacts

C	RS232 PC-CABLE DB9F ** OPTIONAL **	1	21.0801.055
B	HARNESS	1	13.0310.866/00
A2	JHM-L4D/PWM-MS/02P9-1FPR-1PWM/R00-DT	1	20.0114.042/00
A1	JHM-L4D/PWM-MS/02P9-1FPR-1PWM/R00-DT	1	20.0114.042/00
POS	DESCRIPTION	Q.TY	CODE

DENOMINAZIONE: CONTROL SYSTEM		SOSTITUISCE il N°		TECNORD	
FOR A FOREST CRANE		SOSTITUITO dal N°		SCALA	DATA
WITH 2 JHM-PWM JOYSTICK AND HARNESS		OVERALL LAYOUT		/	24.04.15
MATERIALE:		DIS.		APPROV.	
COMMESSA	CLIENTE	COMPLESSIVO	N° ARCHIVIO	AZ	PM
	HIDROM.	SF.1814.HMT			FC
QUOTE SENZA TOLLERANZA: da 1 a 80: ±0,1		da 80 a 200: ±0,15		da 200 a 300: ±0,2	
				da 300 a 600: ±0,3	
				DISEGNO N°	
				SF.1814.HMT.000	