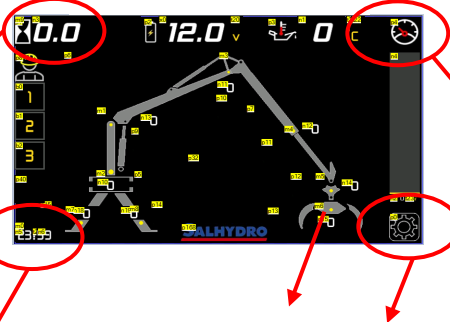


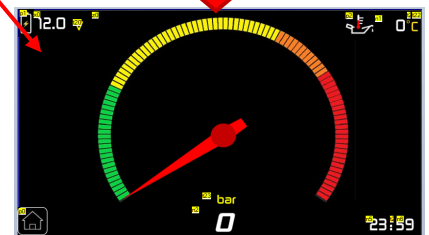
POWER ON->LOGO WILL BE DISPLAYED 1 SECOND



MAIN PAGE



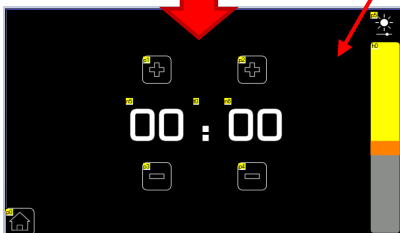
TOUCH ON MANOMETER ->
MANOMETER LAYOUT



TOUCH ON WORK HOUR ->
WORKING HOUR LOG PAGE



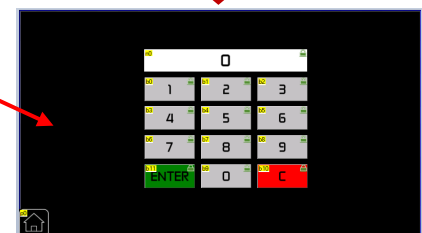
TOUCH ON CLOCK -> CLOCK
AND DISPLAY BRIGHTNESS
ADJUSTMENT PAGE



TOUCH ON SOME YELLOW DOT ON
CRANE OR GOGBAR -> PARAMETRE
ADJUSTMENT PAGE

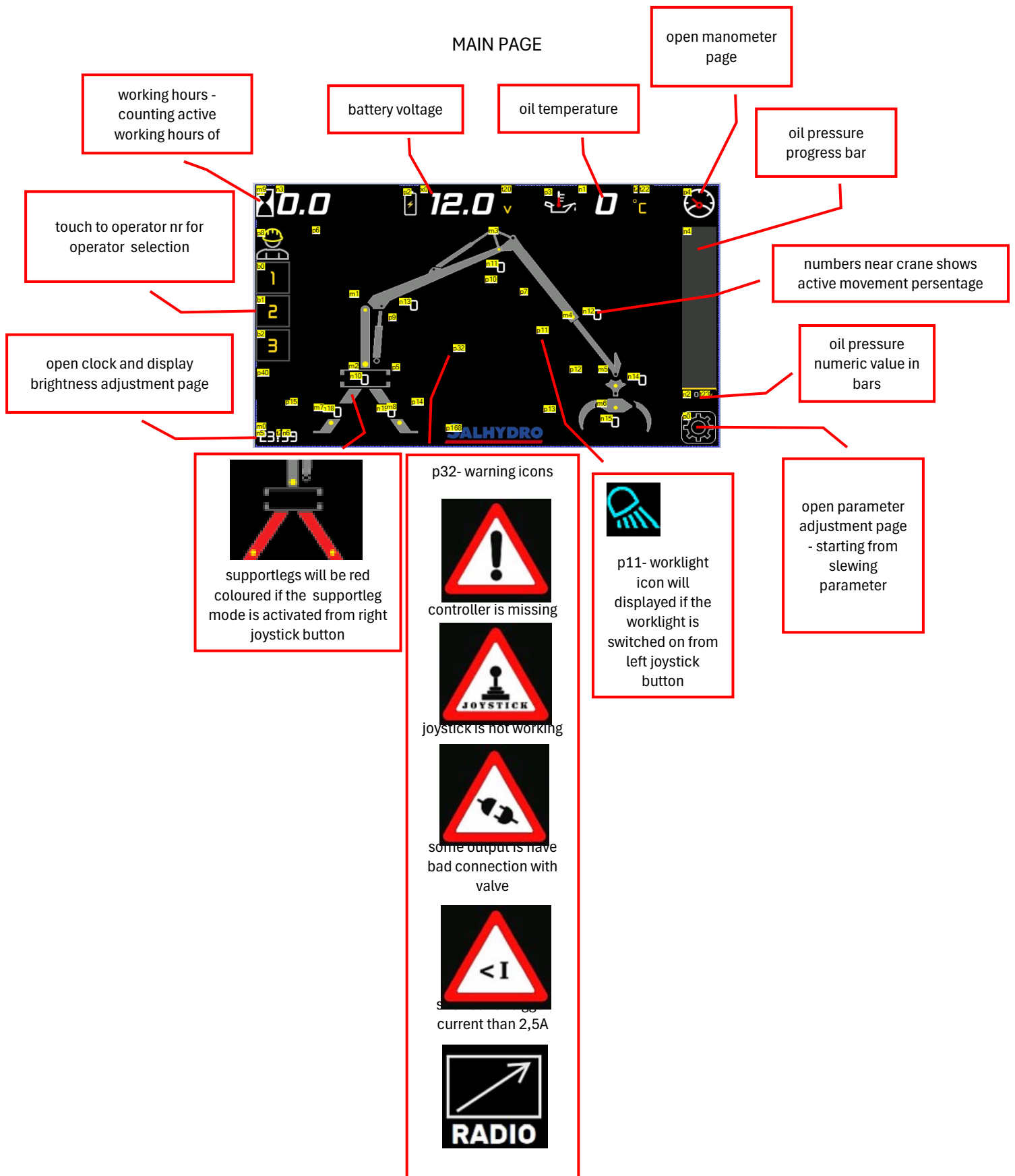


KEEP FINGER ON YELLOW DOT IN RIGHT
BOTTOM CORNER -> SERVICE PAGE VIA
PIN CODE PAGE

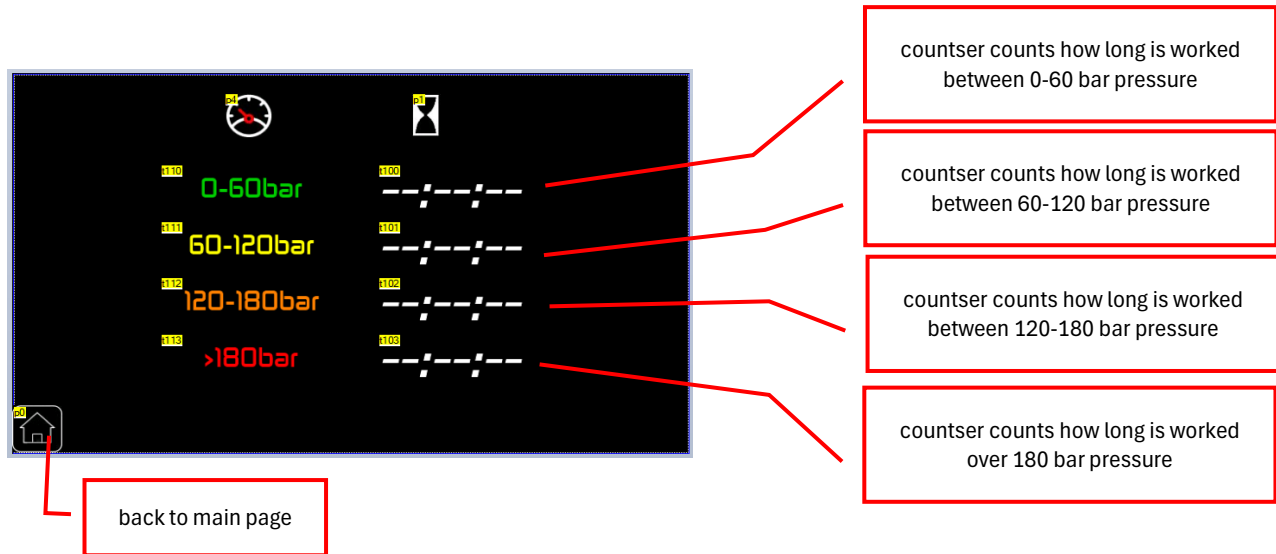


PIN CODE ->ENTER-> SERVICE PAGE

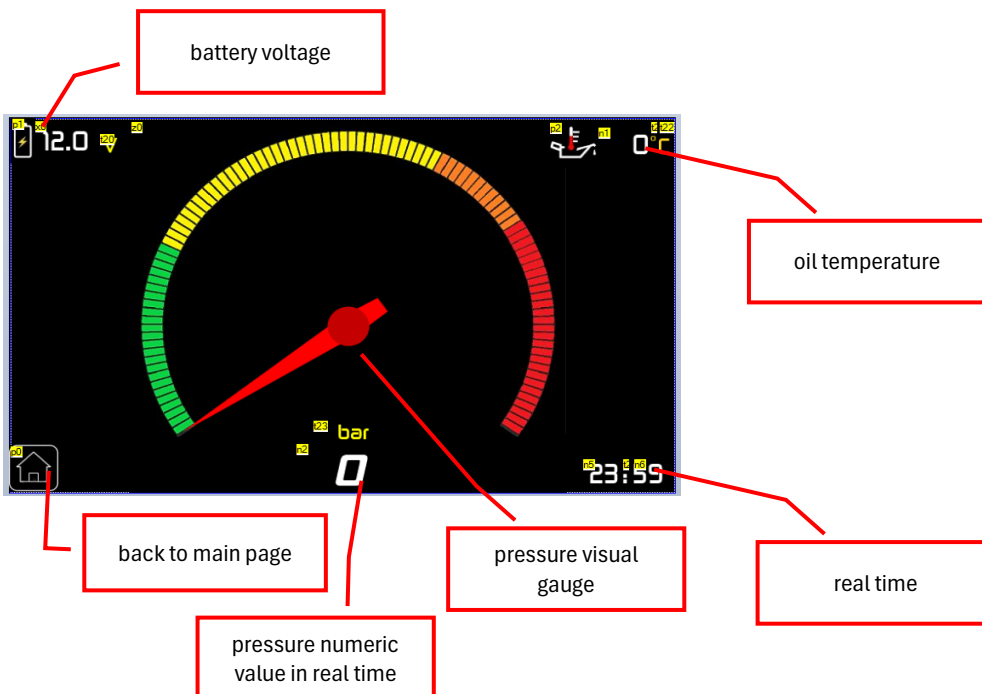




WORKING HOUR LOG PAGE



MANOMETER LAYOUT PAGE



PARAMETERS ADJUSTMENT PAGE



to open desired function setting page touch yellow dot on crane

real time value
of movement iof
joystick in %

real time value of
movement in mA

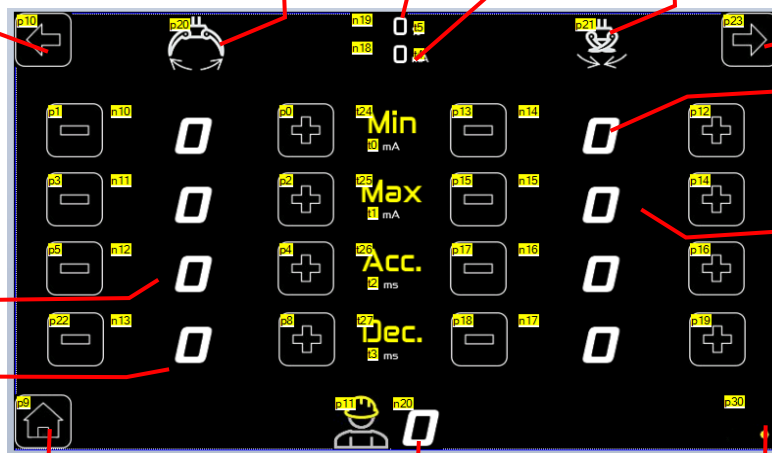
previous function

what function

what function
parameter will
be changed

next function
page

to open desired function touch yellow dot on crane on main page



minimum value of
function movement

maximum value of
function movement

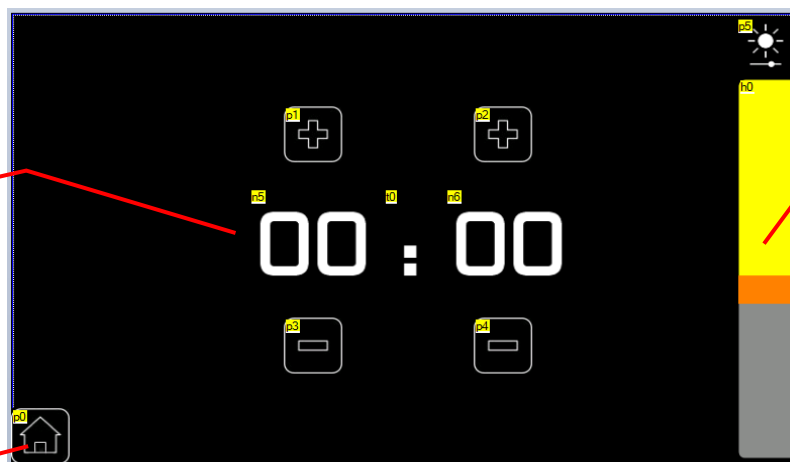
function start
acceleration in
milliseconds

function stop
decceleration in
milliseconds

back to main page

choosen operator

to hidden service
meny
keep finger on 3
seconds
ask pin code from
dealer

CLOCK AND BRIGHTNESS
ADJUSTMENT PAGE

real time clock
adjustment

display brightness
adjustment slider

back to main page